

Leonid Series

Coin Hopper

Mini Hopper(MH)

- Advanced optical coin low level detecting sensor.
- High coin capacity of ca. 500 coins.
- Maximum coin capacity up to 1000 coins with an extra extension bowl.

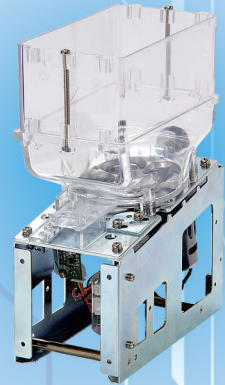


Super Mini Hopper(SMH)

- High payout speed up to 10 coins per second (24V model).
- Compact design with high coin capacity.

JMH

- High payout speed up to 11 coins per second.
- Metal payout disk for longer service lifetime.
- Maximum coin capacity up to 700 coins with two extra extension bowls.



KMH

- Large bowl for high coin storage capacity.
- Customized dispensing height available.
- Option of left- or right-payout direction.



Leonid Series

Coin Hopper

Leonid Hoppers are categorized as a series coin dispensing unit for single denomination, yet user can easily alter payout path dimension by changing position of payout plate. The highest reliability of Leonid Hopper is achieved by its easy-operated and trouble-free design.

Specifications



Interface

MH- Pulse, ICT, Hopper, ccTalk
SMH/JMH/KMH- Hopper



Dispensing Speed

MH- 12V DC: 5~ 6 coins/sec
 24V DC: 6~ 8 coins/sec
SMH- 12V DC: 5~ 7 coins/sec
 24V DC: 8~10 coins/sec
JMH- 11 coins/sec
KMH- 6 coins/sec



Applicable Coin Size

MH- A Type- D:22.5~28mm/T:1.6~2.4mm
 B Type- D:20~23mm/T:1.6~2.2mm
 C Type- D:23~30mm/T:2.5~3.3mm
 D Type- D:23~30mm/T:1.6~2.4mm
 E Type- D:17.9~19.7mm/T:1.3~1.8mm
 F Type- D:22.5~28mm/T:1.0~1.5mm
 G Type- D:20~23mm/T:1.2~1.6mm
 H Type- D:28~31mm/T:2.0~2.8mm
SMH- A Type- D:20~26mm/T:1.6~2.4mm
 B Type- D:26~30mm/T:1.5~2.0mm
 C Type- D:20~23mm/T:1.5~2.1mm
 D Type- D:20~26mm/T:2.4~3.3mm
JMH- D:21~26mm/T:1.6~2.3mm
KMH- A Type- D:23~26mm/T:1.6~1.9mm
 B Type- D:23~26mm/T:1.9~2.3mm



Coin Capacity

MH- ca. 500 coins
SMH- ca. 500 coins
JMH- ca. 300~ 350 coins
KMH- ca. 900~1000 coins



Coin Quantity Detection

MH- Empty: optical sensor
SMH- Empty: conductive detection
 Full: conductive detection (optional)
JMH- Empty: conductive detection (optional)
 Full: conductive detection (optional)



Power Source

MH/SMH - 12V DC/24V DC±5%
JMH/KMH - 24V DC±5%



Power Consumption

MH- 12V DC: Standby : 100mA, 1.2W
 Maximum: 2.5A, 30W
 24V DC: Standby : 50mA, 1.2W
 Maximum: 2.5A, 60W
SMH- 12V DC: Standby : 5mA, 1W
 Maximum: 4A, 48W
 24V DC: Standby : 5mA, 2W
 Maximum: 4A, 96W
JMH- 24V DC: Standby : 20mA, 0.48W
 Maximum: 7A, 168W
KMH- 24V DC: Standby : 50mA, 1.2W
 Maximum: 7A, 168W



Dimension

MH- 157.3 x 105 x 150.7 mm
SMH- 162.9 x 85 x 173.44mm
JMH- 191.7 x 84 x 232.7mm
KMH- 177.5 x 104x 248.7mm(no arm)



Weight

MH- ca. 800g
SMH- ca. 1040g
JMH- ca. 2300g
KMH- ca. 3200g



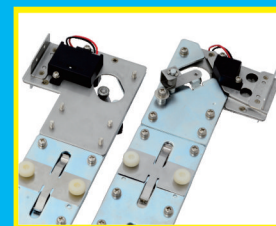
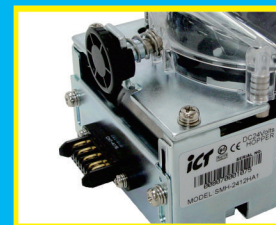
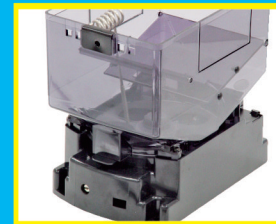
Environmental

MH- Operating Temperature: 5°C~50°C
 Storage Temperature: -30°C/~70°C
 Humidity: 30%~85%RH
 (no condensation)
SMH- Operating Temperature: 5°C~40°C
 Storage Temperature: -30°C/~70°C
 Humidity: 30%~85%RH
 (no condensation)
JMH- Operating Temperature: 0°C~55°C
 Storage Temperature: -20°C/~70°C
 Humidity: 20%~90%RH
 (no condensation)
KMH- Operating Temperature: 0°C~40°C
 Storage Temperature: -20°C/~70°C
 Humidity: 20%~85%RH
 (no condensation)



Recommended Applications

Indoor Gaming/ Amusement



Specifications are subject to change without prior notice.



International Currency Technologies

No.28, Ln. 15, Sec. 6, Minquan E. Rd., Neihu Dist., Taipei City 114, Taiwan
 Phone: +886-2-2793-1236
 Fax: +886-2-2793-6125
 Email: sales@ictgroup.com.tw (Product Information)
 fae@ictgroup.com.tw (Technical Service)
 Website: www.ictgroup.com.tw